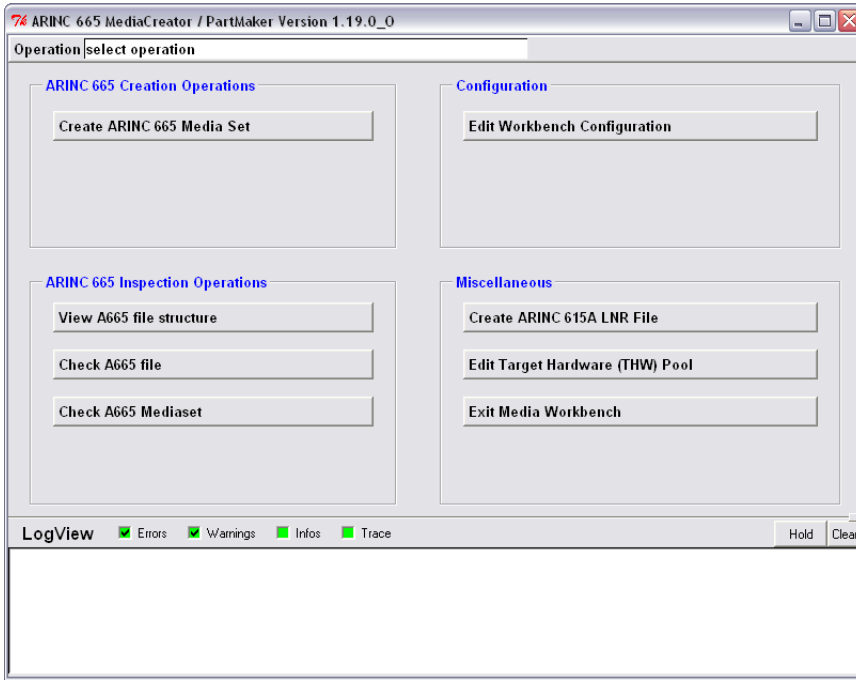


A665 MediaCreator™ ARINC 665-0/-1/-2 Media Creation Tool



Name of Field	Value of Field	Offset
Header File Length	46	0
Load File Format Version	8003	4
Spare	0000	6
POINTERS SECTION		
Pointer to Load Part Number	14	8
Pointer to Target HW ID list	23	12
Pointer to Data File list	28	16
Pointer to Support File list	0	20
Pointer to User Defined Data	0	24
LOAD PART NUMBER SECTION		
Load PN Length	15	28
Load PN	ATP41-OITF-O_	30
TARGET HW IDs SECTION		
Number of Target HW IDs	1	46
Target HW ID Length	6	48
Target HW ID	TDYOIT	50
DATA FILES SECTION		
Number of Data Files	1	56
Data File Pointer	0	58
Data File Name Length	9	60
Data File Name	RTCPU BMP	62
Data File PN Length	5	72
Data File PN	RTCPU	74
Data File Length	2205027	80
Data File CRC	042A	84
Header File CRC	83DD	86
Load CRC	2AFC443E	88

- Creation of ARINC 665-0/-1/-2 media sets and loadable parts for support of ARINC 615A data loading
- Inspection and trouble-shooting of ARINC 665-0/-1/-2 media sets and loadable parts
- GUI version and scriptable version for integration in automatic production chains
- Ideal supplement to TechSAT's ARINC 615A NetLoader™ and AFDX® NetLoader™ applications



A665 MediaCreator™

ARINC 665-0/-1/-2 Media Creation Tool

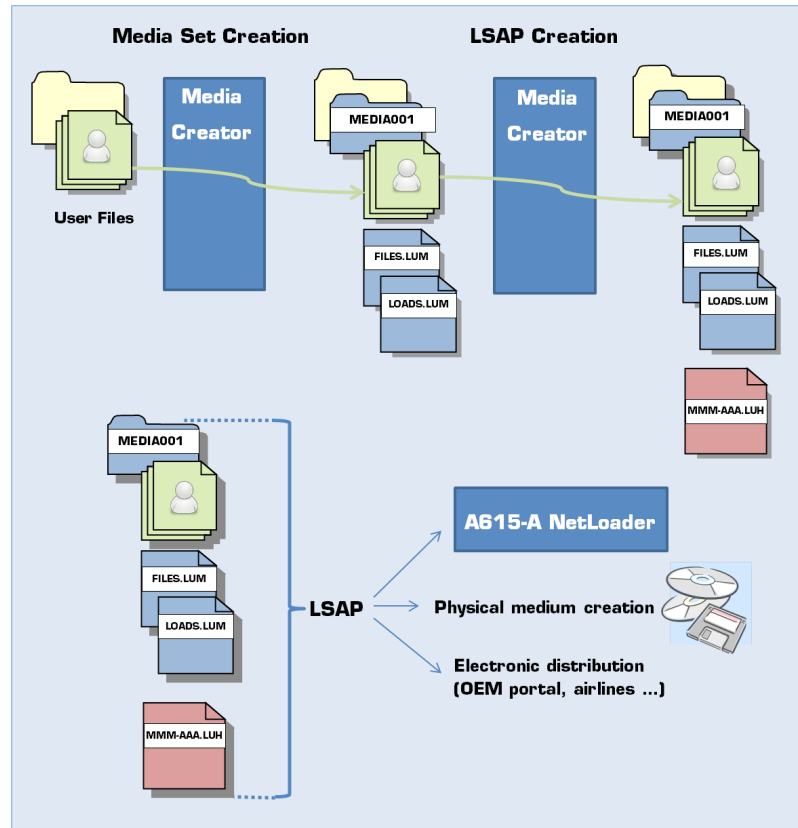
mastering
integration
complexity

Application Scope

The A665 MediaCreator™ is a utility for creation, formatting, and testing of ARINC 665 media sets from user raw software payloads. ARINC 665 media can be created, inspected, and managed for distribution.

Media Set Creation Functions

- > ARINC 665-0, -1, -2 media creation utility
- > Support of 665-1 and 665-2 plus option for individual support of non-conforming media
- > Built-in high-level operation logging (oplog)
- > Allows airlines to create ARINC 665 format Airline Modifiable Information (AMI)
- > Built-in A665 read/write tracing and analysis capabilities (tracelog)
- > Creation of ARINC 665 compliant media sets from raw user files
- > Creation of ARINC 665 compliant loadable parts within media sets
- > All creation parameters configurable by the user (manufacturer code(s), target HW ID(s), part numbers)
- > Import of user-defined data from user raw file
- > P/N Pool Management
- > Cross-platform: Windows, Linux
- > Intuitive graphical user interface



Creation and distribution of Media Sets and LSAPs

Scriptable Interface

- > Python API supporting the creation of media sets, loadable parts, and the definition of user-defined data
- > Command-line interface for integration in automatic production chain
- > Built-in high-level operation logging (oplog)
- > All creation parameters configurable by the user (manufacturer code(s), target HW ID(s), part numbers)

Media Set Inspection Functions

- > ARINC 665 media analysis tool for both fast go/no-go and detailed inspection and fault analysis of in-house created and third-party ARINC 665 formatted media
- > Inspect and troubleshoot ARINC 665-0/-1/-2 media sets
- > Perform Quality Assurance functions on produced media sets
- > Inspect media sets received from other sources
- > Troubleshoot media to trace loading problems
- > Display of ARINC 665 file contents in human-readable form
- > ARINC 665 file and media set verification (including file verification, part numbers compliance, CRC verification)
- > Detailed status report in the session log pane for all operations

Technical Data

Data Loading Software Options

- A615A NetLoader™ – ARINC 615A Ethernet Data Loader (PN 202053)
- AFDX® NetLoader™ – ARINC 615A AFDX Data Loader (PN 202121)

Operating System Options

- Windows XP
- Windows 7 32-bit
- Windows 7 64-bit
- Linux (CentOS)

Part Number

- 202054

AFDX is a registered trademark of Airbus Deutschland GmbH